



GÖLZ®



2019

Productoverview

www.golzgroup.com

An innovative and global growing corporation for more than 70 Years

Since our founding in 1946, GÖLZ focuses on quality, service and innovation. Together with our customers, we constantly develop on new concepts and solutions for professional work with diamond tools and equipment. Our products are sold in over 40 countries through our own sales and service centres, or through trained distributors.

Diamond Tools and Machines under one Roof
GÖLZ – Your Partner for Professional Solutions in the Drilling and Sawing Industry



Core Drills
Professional solution for simple and convenient operation in road and building construction



Table Saws
High precision cutting of tiles, bricks and blocks



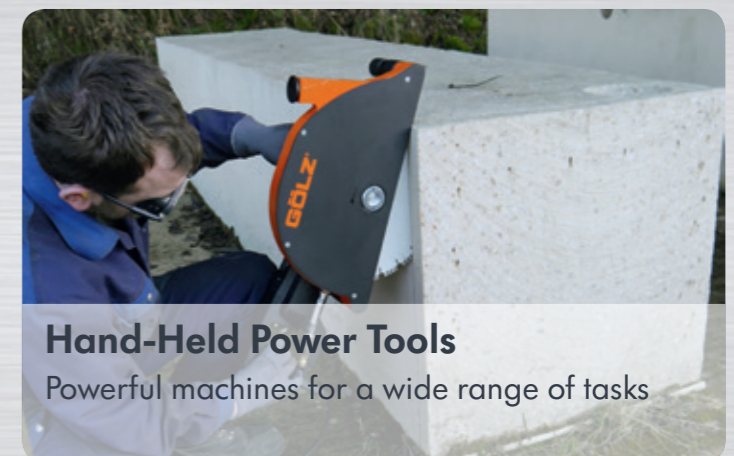
Floor Saws
Compact machines for in- and outdoor application



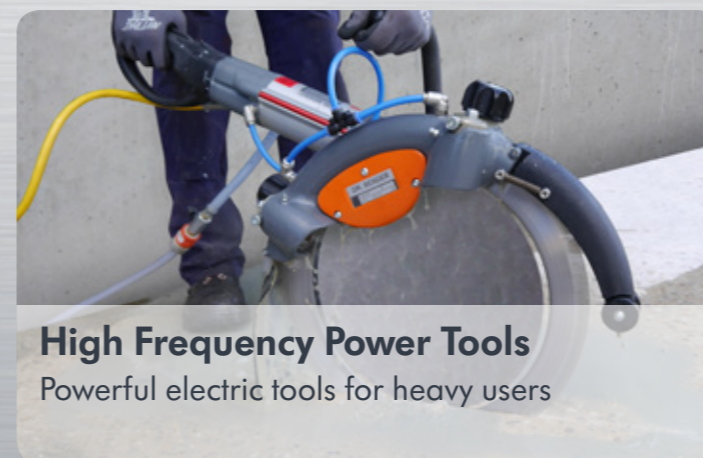
Slurry Fox
Economical solution of slurry recycling



Surface Preparation
Small and compact machines for small grinding jobs



Hand-Held Power Tools
Powerful machines for a wide range of tasks



High Frequency Power Tools
Powerful electric tools for heavy users



Diamond Tools
Excellent quality in the construction industry according to EN13236 and OSA standard

Diamond Tools for electric angle grinders

Ø 115 - 230 mm / Ø 4.5" - 9"



Ø (mm)	Available Bore (mm)	DS36	UG25	SG25
115 / 4.5"	22,23 / 7/8"	Diamond Cup Grinder Concrete general purpose	Turbo Blade – sintered Granite, Marble	Premium Diamond Blade – laser-welded For professional cutting of extremely hard granites, 10 mm turbo-segment
125 / 5"	22,23 / 7/8"			
150 / 6"	22,23 / 7/8"			
180 / 7"	22,23 / 7/8"			
230 / 9"	22,23 / 7/8"			

Diamond Blades for electric angle grinders

Ø 115 - 230 mm / Ø 4.5" - 9"



Ø (mm)	Available Bore (mm)	GX-U12	DTS40	LCPI
115 / 4.5"	22,23 / 7/8"	X-Series - sintered - concrete, exposed aggregate concrete, bricks, general purpose. Precise diamond arrangement	TURBO segmentation - sintered - universal Concrete, bricks, hard clinkers, stone	Concrete Premium – laser-welded High-Speed Saw Blade for concrete, exposed aggregate concrete, hard bricks, clinker and material with hard components
125 / 5"	22,23 / 7/8"			
150 / 6"	22,23 / 7/8"			
180 / 7"	22,23 / 7/8"			
230 / 9"	22,23 / 7/8"			

Diamond Blades for Hand-Held Power Cutters

Ø 300 - 400 mm / Ø 12" - 16"



Ø (mm)	Available Bore (mm)	STARDUST	GX-UL12	RX1
300	20,0/25,4 / 1"	Universal! High-Speed Cutting Blade for concrete, steel, stone, cast iron, PVC and wood	Galaxis Technology – laser-welded High-Speed Saw Blade for concrete, hard bricks, clinker and hard material	Allround – laser-welded concrete, reinforced concrete, clinkers, granite, general purpose
350	20,0/25,4 / 1"			
400	20,0/25,4 / 1"			

Diamond Blades for Tile-, Table- and Block Saws

Ø 180 - 400 mm / Ø 7" - 15.7"



Ø (mm)	Available Bore (mm)	GN25	WHISPER RX1	SLF20
180	25,4 / 1"	Granite premium with silent-steel-core - silver brazed Granite, hard stone	Concrete, general purpose – laser-welded; Diamond blade with Sandwich Silent Core	Premium Plus Quality - sintered High-Speed Cutting Blade for Ceramics, fine matter, tiles, marble
200	25,4 / 1"			
250	25,4 / 1"			
350	25,4 / 1"			
400	25,4 / 1"			

Diamond Blades for Floor Saws

Ø 350 - 1200 mm / Ø 14" - 48"



Ø (mm)	Available Bore (mm)	AS85	CT30	LCA65
350-450	25,4 / 1"	Asphalt Premium - laser-welded For Floor Saws up to 15 kW	Universal – laser welded Concrete, reinforced concrete, bricks, middle hard clinkers	Allround – laser-welded concrete, asphalt, general purpose
500-600	25,4 / 1"			
800-1200	25,4 / 1"			

Diamond Grinding Tools, Polishing Pads & Diamond Wire



GÖLZ Diamond grinding tools are equipped with Easy-Slide-System which allows easy and quick change of diamond tools without any working tools.

Polishing tool for processing of concrete flooring.

Standard and premium diamond wires for professional application in concrete, reinforced concrete, natural stone and steel.

Floor Saws / Push Saws

Powerful and heavy duty floor saws for cutting in concrete and asphalt.



FS125

6,5 PS Honda gas engine
Blade Ø 350 mm / Ø 14"
Cutting depth 120 mm / 5"



FS175

13 HP Honda gas engine
Blade Ø 450 mm / Ø 18"
Cutting depth 165 mm / 6.5"



FS170

Gasoline, Diesel or Electric motor
Blade Ø 500 mm / Ø 20"
Cutting depth 190 mm / 7.5"

Specifications	FS125	FS175	FS170	FS17
Max Cutting depth	120 mm / 5"	165 mm / 6.5"	190 mm / 7.5"	170 mm / 6.7"
Blade diameter	350 mm / 14"	450 mm / 18"	500 mm / 20"	450 mm / 18"
Shaft size	25,4 mm / 1"	25,4 mm / 1"	25,4 mm / 1"	25,4 mm / 1"
Water tank	25 Liter	25 Liter	25 Liter	30 Liter
Engine	Honda GX200, 6,5HP/4,8 kW	Honda GX390, 13HP/9,5kW KOHLER CH440, 14HP/10,5kW	Honda GX390, 13HP/9,5kW KOHLER CH440, 14HP/10,5kW Yanmar LA100, 10HP, 7,4kW	Honda GX390, 13HP/9,5kW
Shaft speed	2.730 min ⁻¹	2.300 min ⁻¹	2.300 min ⁻¹	2.300 min ⁻¹
Feed motion	Push	Push	Push	Push
Cutting depth adjustment	Handwheel	Handwheel	Footpedal & Pneumatic Spring	Handwheel and Pivot Arm
Weight	77 kg	110-112 kg	120-130 kg	112 kg

Floor Saws / Self Propelled and electric



FS17

13 HP Honda gas engine
Blade Ø 450 mm / Ø 18"
Cutting depth 170 mm / 6.7"



FS190

13 HP Honda gas engine
Blade Ø 500mm / Ø 20"
Cutting depth 190 mm / 7.5"



FS250B / D

25 HP Honda Gas Engine /
20 HP Hatz Diesel Engine
Blade Ø 800 mm / Ø 32"
Cutting depth 310 mm / 12.2"

Specifications	FS190	FS250B	FS250D
Max Cutting depth	190 mm / 7.5"		310 mm / 12.2"
Blade diameter	500 mm / 20"		800 mm / 32"
Shaft size	25,4 mm / 1"		25,4 mm / 1"
Water-connection	25 Liter		Integrated waterpump
Engine	Honda GX390, 13HP/9,5kW	Honda GX690, 25HP/18,5kW	Hatz 2G40, 20HP/14,7kW
Shaft speed	2.100 min ⁻¹	1.600 min ⁻¹	1.450 min ⁻¹
Feed motion	Elektric		Electro-hydraulic drive
Blade depth control	yes		Electro-hydraulic
Cutting depth adjustment	Handwheel		Continuously adjustable
V-Belt tension	Manual		Self-adjusting belt tensioner
Weight	137 kg	285 kg	346 kg

Electro Floor Saws



FS125E

3 kW-400 V 3-phase electric motor
Blade Ø 350 mm / Ø 14"
Cutting depth 120 mm / 5"



FS23E

4 kW-400 V 3-phase electric motor
Blade Ø 600 mm / Ø 24"
Cutting depth 230 mm / 9"



FS240SE

7,5 kW-400 V 3-phase electric motor
Blade Ø 800 mm / Ø 32"
Cutting depth 330 mm / 13"



FS40E

15 kW-400 V 3-phase electric motor
Blade Ø 1000 mm / Ø 40"
Cutting depth 400 mm / 16"

Specifications	FS125E	FS170E	FS23E	FS240SE	FS40E
Max Cutting depth	120 mm / 5"	190 mm / 7.5"	230 mm / 9"	330 mm / 13"	400 mm / 16"
Blade diameter	350 mm / 14"	500 mm / 20"	600 mm / 24"	800 mm / 32"	1000 mm / 40"
Shaft size	25,4 mm / 1"	25,4 mm / 1"	25,4 mm / 1"	25,4 mm / 1"	25,4 mm / 1"
Water-connection	external	Gardena	external	GK-coupling	integrated water pump
Motor	3-pase electric	3-pase electric	3-pase electric	3-pase electric	3-phase electric motor
Power	400 V; 3 kW; 50-60 Hz	400 V; 3 kW; 50-60 Hz	400V; 4kW; 50 Hz	400 V; 7,5 kW; 16 A	400 V; 15 kW; 32 A
Shaft speed	2.880 min ⁻¹	2.300 min ⁻¹	1.360 min ⁻¹	1.500 min ⁻¹	930 min ⁻¹
Feed motion	Push	Push	Push	Push	Electro-hydraulic drive
Cutting depth adjustment	Handwheel	Footpedal & Pneumatic Spring	Handwheel	Handwheel	Continuously adjustable
V-Belt tension	Manual	Manual	Manual	Manual	Self-adjusting belt tensioner (half automatic)
Weight	85 kg	136 kg	108 kg	190 kg	418 kg

Tile Saws and Granite Saws

Powerful and robust bridge saws for the building construction and stone market.



TS200

Tile Saw,
Cutting length 720 mm / 28"
Blade Ø 200 mm / Ø 8"



TS250

Tile Saw,
Cutting length 1,140 mm / 45"
Blade Ø 250 mm / Ø 10"



TS250A

Tile Saw,
Cutting length 1,300 mm / 51"
Blade Ø 250 mm / Ø 10"



GS350

Granite Saw
Cutting length 1,200 mm / 48"
Blade Ø 350 mm / Ø 14"



GS350A-120

Granite Saw
Cutting length 1,200 mm / 48"
Blade Ø 350 mm / Ø 14"



GS350A-XL

Granite Saw
Cutting length 1,500 mm or 2,200 mm / 59" - 87"
Blade Ø 350 mm / Ø 14"

Masonry Saws



MS350C / L

MS350C - Cutting length 560 mm / 22"
MS350L - Cutting length 700 mm / 27.5"
Blade Ø 350 mm / Ø 14"



MS400

Cutting length 700 mm / 27.5"
Blade Ø 400 mm / Ø 16"



MS400A

Cutting length 800 mm / 32"
Blade Ø 400 mm / Ø 16"



MS600A

Cutting length 650 mm / 800 mm / 26" / 32"
Blade Ø 600 mm / Ø 24"



MS700A

Cutting length 650 mm / 800 mm / 26" / 32"
Blade Ø 700 mm / Ø 28"

Block Saws



BS400E / P

Electric / gas engine
Cutting length 650 mm / 25.5"
Blade Ø 400 mm / Ø 16"



BS600

230 V / 400 V
Cutting length 400 mm / 600 mm / 16" / 24"
Blade Ø 600 mm / Ø 24"



BS650

Cutting length 500 mm / 20"
Blade Ø 650 mm / Ø 25.5"



BS1000

Cutting length 600 mm / 24"
Blade Ø 1,000 mm / Ø 40"



MB650

Cutting length 650 mm / 26"
Cutting depth 650 mm / 26"



Gölz Table Saws - Overview

Specifications	TS200	TS250 / TS250A	GS350 / GS350A	GS350A-ML	GS350A-XL
Motor	Electric, 230V, 50Hz, IP54			Electric, 230V / 400V, 50Hz, IP54	
Power	1,3 kW		2,2 kW	2,2 kW	2,2 kW
Max. cutting depth	40 mm / 1.6"	65 mm / 2.6"	110 mm / 4.3"	110 mm / 4.3"	110 mm / 4.3"
Max. blade size	200 mm / 8"	250 mm / 10"	350 mm / 4"	350 mm / 4"	350 mm / 4"
Arbor hole	25,4 mm / 1"	25,4 mm / 1"	25,4 mm / 1"	25,4 mm / 1"	25,4 mm / 1"
Cutting length	600 mm (720 mm)	1.140 mm / 1.300 mm	1.000 mm (1.200 mm)	1.300 mm (1.500 mm)	2.000 mm (2.200 mm)
Shaft speed	2.800 min ⁻¹	2.800 min ⁻¹	2.800 min ⁻¹	2.800 min ⁻¹	2.800 min ⁻¹
45° miter-cut	Built-In	Built-In	Built-In	Built-In	Built-In
Water pump	S2, 230 V, 50 Hz, 55 Watt		S2, 230 V, 50 Hz, 55 Watt		
Blade flange size ø	110 mm	110 mm	90 mm	90 mm	90 mm
Transport wheels	yes	yes	yes	yes	yes
Weight	57 kg	72 kg	95 kg / 113 kg	113 kg	135 kg
UK, US, Motors	110 V, 15 A		110 V, 20 A		

Specifications	MS350C	MS350L	MS400 / MS400A	MS600A	MS700A
Motor	Electric, 230V, 50Hz, IP54			Electric, 230V / 400V, 50Hz, IP54	
Power	2,2 kW	2,2 kW	2,2 kW	2,2 kW / 4 kW	2,2 kW / 4 kW
Max. cutting depth	110 mm	110 mm	137 mm	230 mm	280 mm
Max. blade size	350 mm	350 mm	400 mm	600 mm	700 mm
Arbor hole	25,4 mm	25,4 mm	25,4 mm	30 mm	30 mm
Cutting length	560 mm	700 mm	700 mm / 800 mm	650 mm (800 mm)	650 mm (800 mm)
Shaft speed	2.800 min ⁻¹	2.800 min ⁻¹	2.800 min ⁻¹	1.450 min ⁻¹	1.450 min ⁻¹
45° miter-cut	No, Miter-block optional	No, Miter-block optional	Built-In	No	No
Water pump	S2, 230 V, 50 Hz, 55 Watt				
Blade flange size ø	90 mm	90 mm	90 mm	140 mm	140 mm
Transport wheels	yes	yes	yes	no	no
Weight	56 kg	63 kg	66 kg / 79 kg	115 kg	125 kg
UK, US, Motor	110 V, 20 A available				

Specifications	BS400	BS400	BS600	BS650	BS1000	MB500 / 650
Motor	230 V / 400 V, 50 Hz, IP54	Honda GX160	230 V / 400 V, 50 Hz, IP54	3-phase, 400 V, 50 Hz, 16 A, IP 54	3-phase, 400 V, 50 Hz, 32 A, IP 54	230 V, 50 Hz
Power	2,2 kW	4,0 kW / 5,5 HP	2,2 kW	5,5 kW (7,5 PS)	7,5 kW (10 PS)	2,2 kW
Max. cutting depth	150 mm (double-sided cutting 280 mm)		235 mm	260 mm	420 mm	500 mm / 650 mm
Max. blade size	400 mm	400 mm	600 mm	650 mm	1.000 mm	
Arbor hole	25,4 mm	25,4 mm	25,4 mm	60 mm	60 mm	
Cutting length	650 mm	650 mm	400 mm - 600 mm	500 mm	600 mm	655 mm
Shaft speed	2.650 min ⁻¹	2.550 min ⁻¹	1.440 min ⁻¹	1.020 min ⁻¹	990 min ⁻¹	
45° miter-cut	No, Miter-block optional	No, Miter-block optional	no	no	no	yes
Water pump	S2, 230 V, 50 Hz, 55 Watt	efficient mechanical water pump	S2, 230 V, 50 Hz, 55 Watt	electric	electric	
Blade flange size ø	90 mm	90 mm	130 mm	120 mm	160 mm	
Weight	90 kg	93 kg	95 kg	230 kg	280 kg	174 kg / 180 kg

Grinding Machines



SM250

Motor: 230 V, 16A
Grinding diameter: 250 mm / 10"



SM280

Motor: 230 V, 16A
Grinding diameter: 280 mm / 11"



SM400S

Motor: 400 V, 16A
Grinding diameter: 400 mm / 16"

Slurry Fox

Portable slurry solutions for concrete slurry resulting in the separation of solids and water. Complete solutions for the concrete cutting, floor grinding, precast and ready-mix industries.



SFP3L

The compact and mobile solution for your day to day operation



SFP8L

Mobile and also stationary Slurry filter press for continuous operation on the jobsite or on the yard.



SFP647

For industrial use on the construction site or in concrete and stone factories

Hand-Held Power Tools



HS400E

Powerful Electro Hand Saw with changeable Ring Saw System



ES 350

Electrical Cut Off Saw for wet and dry operation. The allround saw for most of your sawing requirements up to a cutting depth of 130 mm (5 inch)



SF150

Powerful Wall Chaser - 150 mm / 6" Designed for your safety and comfort



SM125

Concrete grinder. Robust and powerful - perfect for your grinding and polishing requirements for small jobs. Easy polishing - grinding - cleaning

Core Drilling Machines - aluminium

Core drilling machines for different applications in building construction.



SD160

The compact, lightweight and easy solution for all installation and fastening holes up to Ø 162 mm / Ø 6"



RD160

Reliable core drilling machine for all installation holes up to Ø 160 mm / Ø 6"



SD250

Lightweight and solid. For all installation holes up to Ø 250 mm / Ø 10"



RD250

Lightweight and professional core drilling machine for holes up to Ø 250 mm / Ø 10"

Core Drilling Machines - robust stainless steel

Adaptable with numerous electric, gasoline, pneumatic and hydraulic motors.



KB130

The established and proven Core Drill Set for the construction site up to Ø 250 mm / Ø 10"



KB400

Heavy User core drilling machine with combined slider/roller carriage. For holes up to Ø 400 mm / Ø 16"



KB500

Heavy User core drilling machine with combined slider/roller carriage. For holes up to Ø 600 mm / Ø 24"

Pneumatic and gas powered Core Drilling Machines

Core drilling machines for road works, sewage pipes and building construction.



KB150 AIR

Multipurpose core drilling machine for the sewer, road and building industry. Max. Ø 300 mm / 12"



KB150 GAS

Multipurpose core drilling machine for the sewer, road and building industry. Max. Ø 300 mm / 12"

Core Drilling Machines for road works and sewage pipes

Powered by STIHL 2-stroke motors are the most flexible solution in the construction industry.



KB200 GAS

Specially designed for taking core samples from roads or installing barrier posts and different kind of pillars. Max. Ø 200 mm / 8"



KB350 GAS

The original and most modern solution in pipe and sewage drilling for house connections and surface water with GÖLZ KB 350 and STIHL-2-stroke-engine. Max. Ø 350 mm / 14"

- Available with
- Gas Motor
- Air Motor
- Electric
- Hydraulic

Hand Held Core Drilling Machines Drill Stands

Hand Drills for dry drilling in soft bricks and wet drilling in concrete, reinforced concrete and stone.



SD160

SD250



FB20P

3-Speed Hand Held Core Drill. For hand held or drill stand operation

For several applications as fixings, installations and openings for gas, water, heating and air supplies.



FB23S / FB23P / FB25P

2-Speed Heavy Duty Hand Held Core Drill. Compact Core Drill for anchor and installation holes



FB33S / FB33P

3-Speed Heavy Duty Hand Held Core Drill. Powerful core drill with full metal housing for hand held or drill stand operation



FB33PNT / FB33SNT

3-Speed Heavy Duty Hand Held Core Drill. Powerful core drill with full metal housing for dry and wet operation



VP25 Vacuum Pump



Vacuum Equipment



GS70K Wet Vac



WB50E - Battery powered



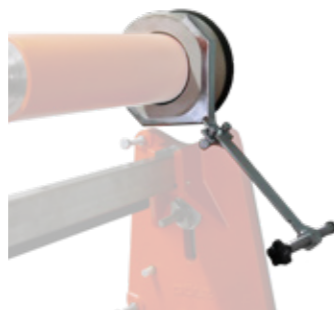
WB 10 L Watertank



Submersible Pump



APT Dust & Water Collector



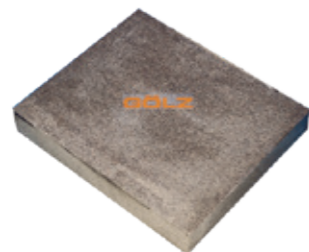
Water & Slurry Collectors



Fastening Kit



Core Lifter



Abrasive Sharpening Block



Motor Plates

Drill Bits

Ø (mm)	Qty	LxW (mm)
25	3	16x3,0
32	4	
42	5	
52	5	
62	6	24x3,5
72	6	
82	7	
92	8	
102	9	24x4,0
108	9	
112	9	
122	10	
125	10	24x4,5
132	10	
152	12	
158	12	
162	12	24x4,5
172	13	
182	13	
186	13	
200	14	24x5,5
212	15	
225	15	
250	15	
300	18	24x4,5
350	20	
400	22	
450	23	
500	25	24x4,5
600	28	
800	35	
1000	45	
1200	55	24x5,5

Crown Bits

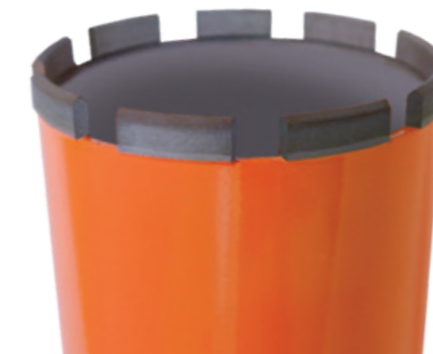
Ø (mm)	Qty	W (mm)
10	Ring	2,5
12	Ring	2,5
14	Ring	2,5
15	Ring	2,5
16	Ring	2,5
18	Ring	2,5
20	Ring	2,5
22	Ring	2,5
24	Ring	2,5
25	Ring	2,5
26	Ring	2,5
28	Ring	2,5
30	Ring	2,5
32	Ring	2,5
35	Ring	2,5
38	Ring	2,5
40	Ring	2,5
50	Ring	2,5

Segments

Ø (mm)	LxWxH (mm)
25	16x3,0x10
32-42	16x3,0x10
42-56	24x3,5x10
62-72	24x3,5x10
76-92	24x3,5x10
92-112	24x3,5x10
92-112	24x4,0x10
122-172	24x4,0x10
182-250	24x4,0x10
260-600	24x4,5x10
500-1200	24x5,5x10



GALAXIS TECHNOLOGY



Brazing Magnets



Adaptors & Extensions



Toolfree Drillbit Connection PQ6



Great Britain

Gözl (UK) Ltd.
Unit A5
Springhead, Enterprise Park
Northfleet
Kent DA 11 8HB
Tel +44 1 474 321 679
Fax +44 1 474 321 477
E-Mail info@goelz.co.uk

Benelux

Gözl Benelux N.V. Belgien
Eupener Straße 61
B-4731 Raeren-Eynatten
Tel +32 (0) 87 55 23 49
Fax +32 (0) 13 78 33 28
E-Mail benelux@goelz.de

Germany

Gözl GmbH
Postfach 26
53938 Hellenthal
Dommersbach 51
53940 Hellenthal
Tel +49 (0) 2482 - 120
Fax +49 (0) 2482 - 12 222
E-Mail info@goelz.de

France

Gözl S.A.S.
1, rue de la Mairie
F-67370 Berstett
Tel +33.(0)3.88.59.43.00
Fax +33.(0)3.88.59.47.77
E-Mail info@golz.fr

Austria

Gözl Ges.m.b.H.
Samstraße 52
A-5020 Salzburg
Tel +43 (0) 662 - 43 81 75
Fax +43 (0) 662 - 43 07 34
E-Mail info@goelz.at

USA

Golz L.L.C.
E-Mail info@golzusa.com

China

Gözl (Hang Zhou) Intelligent Technology Co.,LTD
No. 180, Hongxing Road
Xiaoshan Economic & Technology
Development Zone
Hangzhou, Zhejiang
Tel +86 571 8352 7672
Fax +86 571 8269 2269
E-Mail info@golzgroup.com

Your GÖLZ dealer

